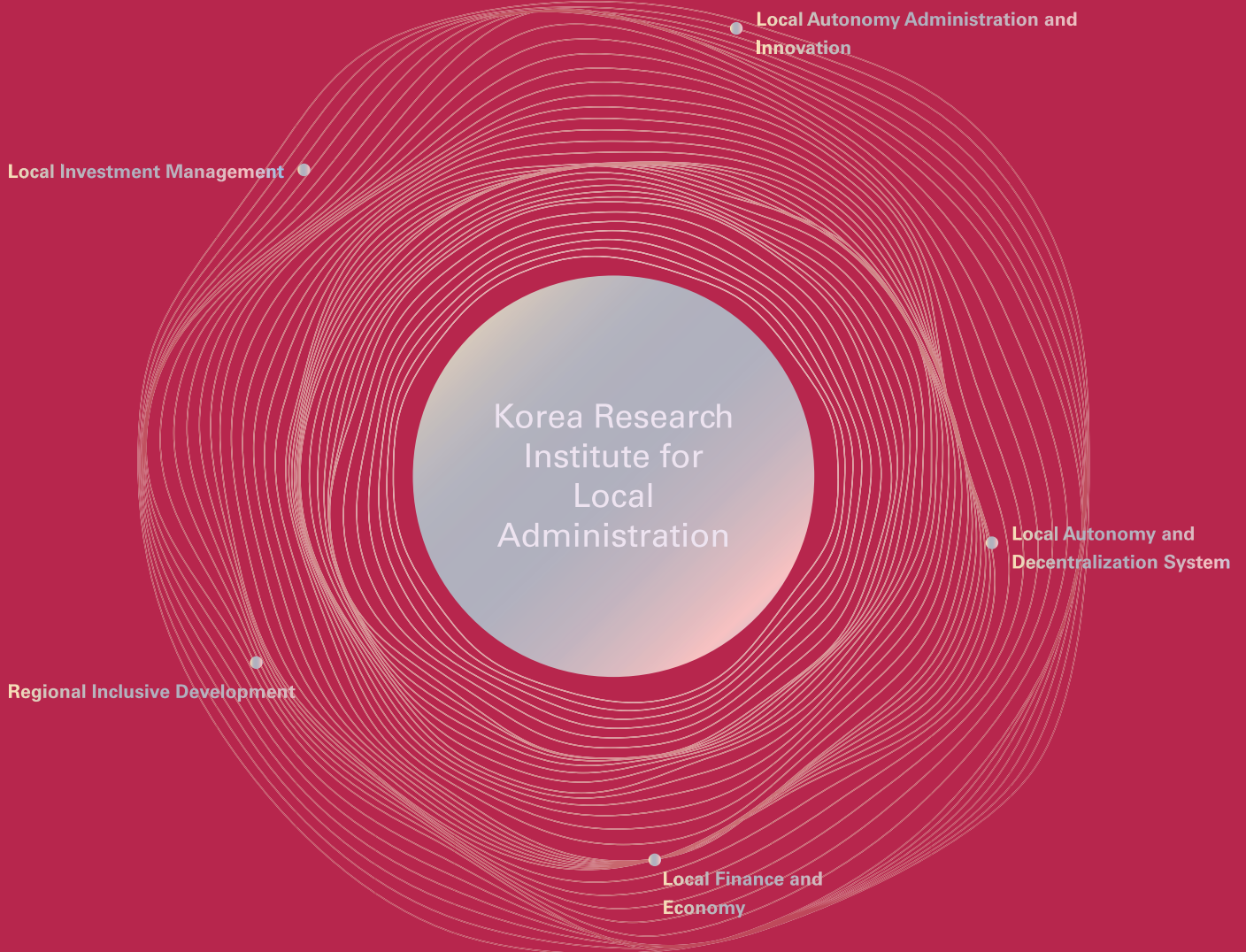


Leading the autonomous decentralization and balanced regional development

Korea Research Institute for Local Administration



CONTENTS

01

KRILA Introduction

- 06 President's message
- 08 Mission
- 08 History
- 09 Organization
- 10 Major Achievements in History

02

Main Project

- 16 Research Areas
- 18 Feasibility Research
- 20 Exchange & Cooperation
- 22 Key events
- 24 2020 Research Plan
- 25 2019 Research Performance

03

Knowledge Sharing

- 30 Publications
- 30 KRILA Website
- 31 Membership Services
- 31 Contact

Korea Research Institute for
Local Administration,
Leading the autonomous
decentralization
and balanced regional
development



01 KRILA Introduction

We will become a global research institute that practices local self-governance.

The Korea Research Institute for Local Administration leads the advancement of national development and local administration through innovation of decentralization and local autonomous research activities. KRILA will contribute to Korea's development of local government by securing world-class research capacity, establishing an academic base in related fields, and expanding academic exchanges both at home and abroad.

President's Message

“KRILA will become the best research institute responsible for the advancement of the local autonomy in Korea.”

As a policy research institute established in 1984, Korea Research Institute for Local Administration has grown into a core research institute that has led the research on local autonomy in Korea. Over the past thirty five years, we have received the evaluation that we contributed to the development of local autonomous administration in Korea through numerous research activities and played a key role in establishing the academic foundation of related fields.

In 2016, as KRILA moved to Wonju Innovative City, we have reached the time to prepare for the next 30 years of a new leap forward. In addition to evaluating the past 30 years, it has become an important time to prepare for the next 30 years.

In particular, Moon Jae-in administration has set a key policy strategy for ‘autonomous decentralization and balanced development’ to lead the next five years of government, so the expectations and roles of the Korea Research Institute for Local Administration are more important than ever before. Since the province is the starting point, not the end, the results of KRILA on local autonomy and administration can be said to be the finishing primer in creating a powerful energy for the national government administration.

In order to respond positively to the expectations and roles assigned to the Korea Research Institute for Local Administration, KRILA will try to secure a high level of research capacity that is appropriate for a national core research institute and to produce reasonable and scientific research results with high policy acceptability and feasibility.

I would like to ask for your continued interest, support and constructive feedback for KRILA to grow more and more in the future.

Thank you.

President **Yun Tae-beom**



KRILA



KRILA Dasan Hall

Mission

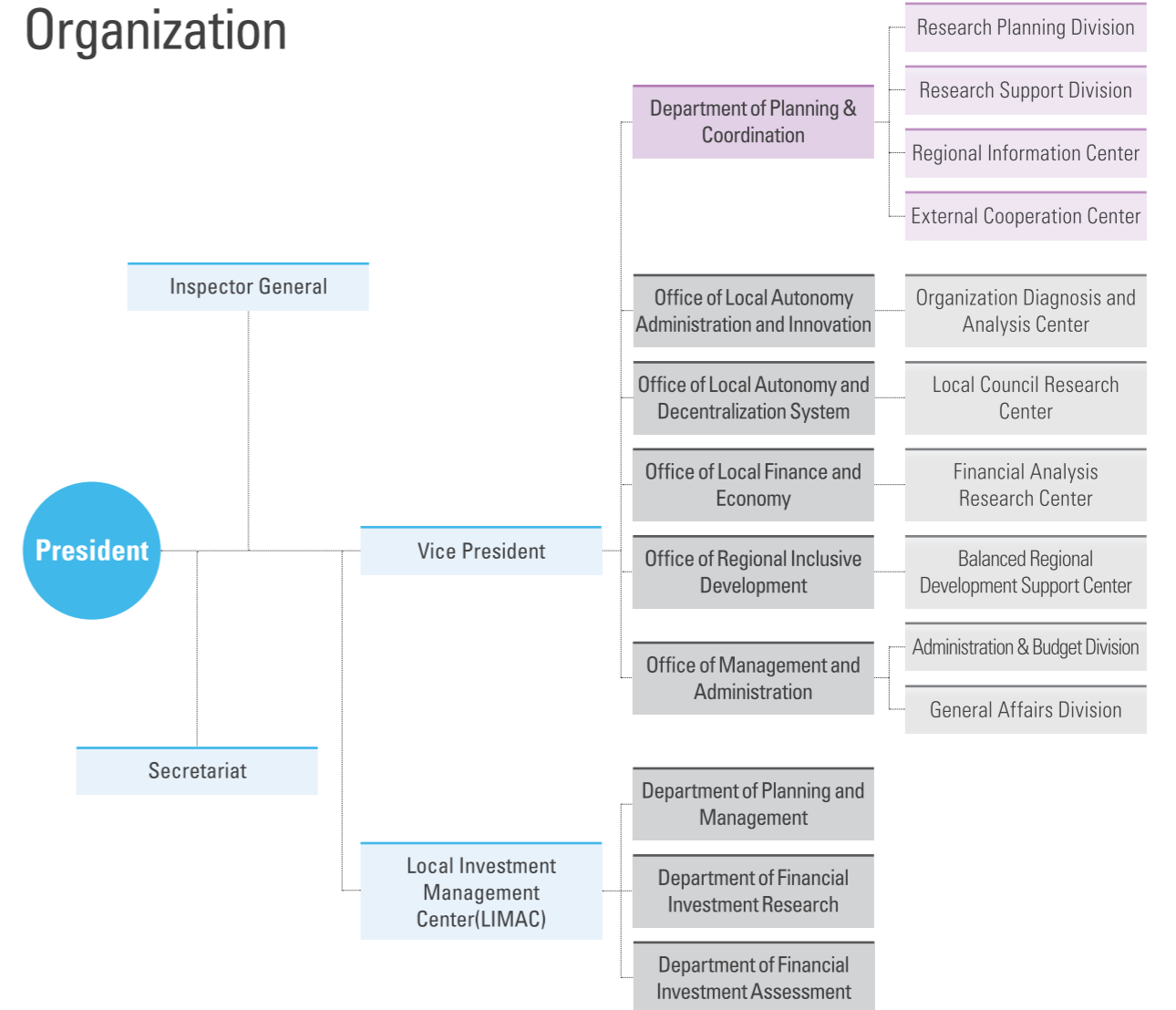
Purpose of Establishment

To contribute to the establishment of the local administrative policy of national and local governments through realistic and systematic investigation and research of the projects of the department related to national development and advancement of local administration.

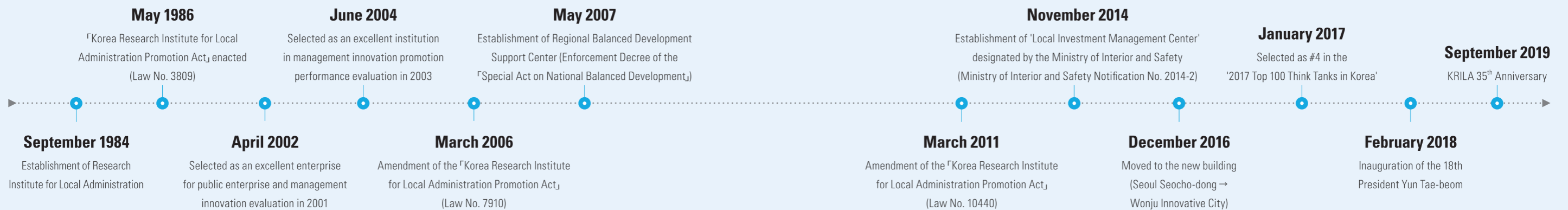
Functions

- Policy studies on local administration, local finances, and regional development
- Feasibility study and evaluation study of local investment project
- Diagnosis and consulting of the central government, local governments, and private organizations
- Commissioning and education of research services of the central government, local governments, and private organizations
- Exchange and cooperation with domestic and foreign research institutes and international organizations

Organization



History



Major Achievements in History

Established in 1984, the Korea Research Institute for Local Administration has been growing into a core research institute that leads the research and policy development in the field of local autonomy in Korea.

1980

1980s Early Period

Presenting the Developmental Coordinates for Local Administration

In the national strategy research, "National Long-Term Development Plan Toward year 2000", the Korea Research Institute for Local Administration conducted a study entitled "Coordination Setting of Local Administration Toward the 2000s", focusing on the local administration field. Through this, the future of the local administration was predicted and the direction of the development was suggested, which not only specifically showed the development coordinates of the local administration but also made a great contribution to laying the foundations of local government studies.

- Study on the analysis of local administrative functions
- Presentation of the local administrative coordinates for the year 2000
- Study on the regional development administrative system for the local age
- Study on the regional administrative system of the metropolitan area
- Study on the model of local finance analysis



1990s Establishment Period

Opening the Era of Local Autonomy with Leading Administrative Innovation

Since 1995, the period of administrative innovation along with changes in the national operating system, the Korea Research Institute for Local Administration has established the changed administrative management system in the local administration field with the establishment of the head of the civil service. In particular, in the administrative reform process promoted in 1998, a comprehensive diagnosis of the functional allocation, organizational structure, and operating process of local governments was made and based on this, reformation alternatives were suggested and government reformation reality was visualized.

- Study on strengthening public relations function for the efficiency of resident participation
- Study on reorganization plan of a local administrative system for reunification
- Study on the improvement of taxation management of delinquent tax
- Study on rational improvement plan of local grant tax system
- Response strategy for the globalization of local administration:
A study on the role of local governments in response to globalization

1990



2000s Settlement Period

Toward the Rise of Self-government and the Establishment of a Local Administrative System

By adopting autonomous decentralization as a core national task, the Korea Research Institute for Local Administration capacity was focused on the content creation of policy promotion. Through the basic design of 'total cost of labor', a contribution was made to the growth of the autonomous organization rights of the local autonomous entities and strengthened the efficiency of the local administration by continuing the organization and financial diagnosis projects targeting the local governments. In particular, an educational provision on the administrative service charter system took the early establishment of user-centered administration paradigm and system.

- Goal management result oriented, performance indicator development case study
- Study on effective policy implementation for balanced national development
- Research on fostering local industries
- Evaluation of local finance adjustment system and improvement plan research
- Study on the specialization of local tax law system



2010s Expansion Period

Leading the Paradigm for Local Administrative Leaps

KRILA has been leading the change of paradigm of local administration by continuously carrying out basic research activities through central policy projects in local administration, local finance, and regional development. In 2014, the Local Investment Management Center(LIMAC) was established to conduct a feasibility study and evaluation of local investment projects. In 2016, the institute moved to Wonju Innovative City, thus laying the foundation for a new leap forward. In this way, we are preemptively preparing the 4th Industrial Revolution and building a "social innovation ecosystem" that will be sustainable in the local government.

- Study on the diversification of local government organization operating system
- Study on the prospect of social welfare demand and expansion of financial resources of local government
- Study on activation plan of local communities led by local governments
- Study on the establishment of a customized administrative system for underdeveloped areas
- Design of autonomous decentralized regional balanced development policy



2020s Leaping Period

New Leap Forward through the Relocation to Wonju Innovative City

In December 2016, the Korea Research Institute for Local Administration moved closer to the field of quality improvement of residents' life through the relocation to Wonju Innovative City. Based on the results of research and network, we will pursue our nation's new challenge and the calling of this age of the autonomous decentralization and balanced development, seek various ways to promote government innovation and social innovation, and actively and preemptively promote new challenges and environmental changes.

- Study on the strategy of restructuring the transmission system to improve the effectiveness of the low fertility policy
- Study on the operation plan of residents' participation budget system for local finance accountability
- Study on the establishment of a participatory regional governance system for social innovation
- Study on the effective promotion of the autonomous decentralization type balanced development policy



02

Main Project

We unearth the growth engine of local autonomy.

The Korea Research Institute for Local Administration is the cornerstone of local autonomy and decentralization in Korea.

KRILA is carrying out research projects that lead the local autonomous development such as local autonomy and policy, revitalization of the local economy, and development of future regions, and we suggest future-oriented plans such as feasibility study of local investment projects and domestic and international cooperations.

한국지방행정연구원

Research Areas



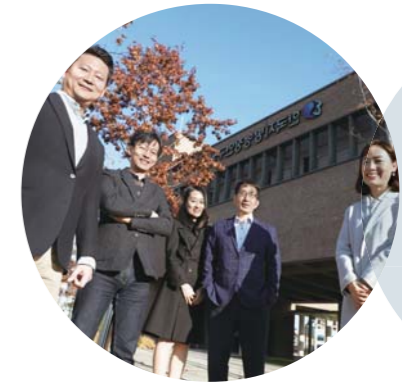
Office of Local Autonomy
Administration and Innovation



Office of Local Autonomy and
Decentralization System



Office of Local Finance and Economy



Office of Regional Inclusive
Development

Office of Local Autonomy Administration and Innovation

(Organization Diagnosis Analysis Center)

Among the research fields on local autonomy, we mainly study areas such as organizational management, personnel management, regional innovation, social innovation, and especially research policy development and consult in areas such as local government organizational diagnosis, manpower scale, improvement of organizational culture, and local government performance management.

Organization Diagnosis and Analysis Center

- Consulting on functional division, the organization of equipment, and manpower scale
- Consulting for recruiting, job placement, training, evaluation, compensation
- Consulting on Improvement to the way of working, communication and collaboration
- Research on the organizational management and diagnosis of local governments
- Organizational analysis and diagnosis research tailored to local governments
- Research and consulting on the improvement in the organizational culture
- Research and consulting on the performance management of local governments

Office of Local Autonomy and Decentralization System

(Local Council Research Center)

It studies the general field related to the local autonomy system and autonomy policy. In particular, institutional research, policy development and consulting work are done in areas such as autonomous decentralization and function transfer, administrative restructuring, resident participation.

Local Council Research Center

- Research on local council system
- Development of training programs for local council members and support education.
- Support domestic and overseas education programs for local council members.
- Consulting for local councils.

Office of Local Finance and Economy

(Financial Analysis Research Center)

We study the overall field related to the local financial system and fiscal polices, and conducts system research, policy development and consulting for fields such as fiscal decentralization, budget and accounting, local bonds, shared local taxes, state subsidies, funds, financial analysis and diagnosis, financial business assessment, and financial management.

Financial Analysis Research Center

- Research on local finance analysis and diagnosis system
- Research on local finance crisis management system
- Consulting on local finance analysis, finance diagnosis
- Preliminary monitoring for local finance and in-depth diagnosis
- Statistics management related to local finance analysis

Office of Regional Inclusive Development

(Balanced Regional Development Support Center)

We conduct research on fields related to revitalizing local economies and future regional development, establishes policy alternatives for balanced regional development, develops policies for population-declining regions and youth, discovers the driving force for new growth to revitalize local economies, creates jobs, inter-cooperates with regions, develops underdeveloped areas, revitalizes close-up on life SOC, and devises policies for island and border areas.

Balanced Regional Development Support Center

- Research on balanced regional development policies
- Research on policy measures to revitalize the regions with declining populations
- Research on creating local jobs
- Research on measures to revitalize the close-up on life SOC
- Research on regional Innovation policies
- Development of policy measures for local youth
- Assist in finding key measures for regional development of national and local governments
- Analyzing and diagnosing regional conditions, establishing basic structures and plans for regional development
- Research on island and border areas development
- Analysis of industry and economic activation by region
- Analysis of safety and welfare status by region
- Local economic revitalization, Development and training of residents' happiness improvement manual



Local Investment Management Center (LIMAC) of the Korea Research Institute for Local Administration (KRILA)

Feasibility Research

Local Investment Management Center(LIMAC)

(Department of Planning and Management,
Department of Financial Investment Research,
Department of Financial Investment Assessment)

To ensure the efficiency of local financial operations, the organization conducts feasibility research on new local investment projects worth more than KRW 50 billion under the Local Finance Act (review of the adequacy of project plans, reexamination of the feasibility), carries out research on the feasibility study for local investment projects and system improvement, monitors local investment projects by stages through the management of the investment project history, and reviews the feasibility for local state-owned enterprises ("Local Public Enterprises Act") and private proposals ("Act on Public-Private Partnerships in Infrastructure").

Major Research Fields

- Feasibility study and reexamination on new investment projects with a total project budget of more than KRW 50 billion
- Improvement in the investment review system such as the development of feasibility study guidelines and support for the investment review operation
- Survey and performance evaluation required for the ex-post evaluation of investment reviews
- Education related to the investment review and feasibility study
- Management of the investment project history
- Review of the self-feasibility studies of local governments (total project budget of less than KRW 50 billion)
- Survey on the adequacy or review of proposals under the Act on Public-Private Partnerships in Infrastructure
- Feasibility review of the establishment of local state-owned enterprises and new projects



KRILA will lead the management of fair local investment projects by establishing a standardized evaluation system of the local autonomous administration.

Other Projects

Financial Analysis of Local Governments

A project to improve the soundness and efficiency of local finance by comprehensively analyzing and evaluating the financial status and performance of local governments based on objective statistical data.

Performance Evaluation of the Financial Restructuring Plan of the Financial Diagnosis Group

A project that evaluates the implementation performance of the financial restructuring plan of the financial diagnosis group and analyzes the financial operation result after the restoration plan and suggests the future direction of the system operation.

Performance Evaluation of Local Aid Projects and Major Financial Projects

Performance evaluation of local aid projects supported by a private sector or a major financial project according to the Local Finance Act Article 5 (3) and Article 37 (4) which implements a mandatory performance evaluation from 2016.

Regional Representative · Korean Performing Arts Foundation Monitoring and Evaluation

Establishment and evaluation of objective and reliable evaluation system of regional representatives and Korean performing arts support projects contributing to enhancing the cultural enjoyment of the people, and deriving appropriate feedback of the monitoring and evaluation results.

A Study on the Evaluation and Performance Creation of Region Customized Leading Projects

Evaluation index design for performance creation based on the analysis result of the actual state of the leading projects carried out by the Presidential Committee for Balanced National Development, and drafting measures to improve the system for project performance management.



Exchange & Cooperation

The Korea Research Institute for Local Administration has concluded agreements with more than 70 institutions, including local governments, leading domestic and overseas universities and research institutes, and has pursued various joint projects.



Domestic Cooperation Organizations

Government and Public Institutes

OECD Korea Policy Centre, Gangwon-do Yanggu-gun, Gangwon-do Wonju City, Gyeongsangnam-do Changwon City, Gyeongsangnam-do Hapcheon-gun, Gyeongsangbuk-do Ulsan-gun, Daejeon Daedeok-gu, The Presidential Commission on Policy Planning(PCPP), Sejong Special Self-governing City, Ulsan Junggu District, Wonju Innovative City Institution, Korea Institute for Child Care and Education (KICCE), Jeollanam-do Sinan-gun, Jeollabuk-do Namwon City, Chungcheongnam-do Nonsan City, Chungcheongnam-do Seosan City, Korea Gas Corporation(KOGAS), Korea Appraisal Board, Korea Health Promotion Institute(KHPI), Korea Social Enterprise Promotion Agency(KoSEA, K-water, KORAIL, Korea Land & Housing Corporation(LH), Ministry of the Interior and Safety and Local Government, Ministry of the Interior and Safety Local Government Officials Development Institute(LOGODI)

Universities and Graduate Schools

Public Administration College of Kyungpook National University, Wonju Campus of Yonsei University, Kookmin University, Yeungnam University, Gachon University, Public Administration Graduate School of Chonnam National University, Public Administration Graduate School of Yeongnam University, Public Administration Graduate School of Incheon University, Chungbuk National University, Environment College of Seoul National University, Public Administration College of Seoul University, Jeju National University

Research Institutes

Korea Research Institute for Human Settlements(KRIHS), Korea Institute for Industrial Economics & Trade(KIET), The Seoul Institute(SI), Suwon Research Institute(SRI), Jeju Research Institute(JRI), Fiscal Performance Management Institute(FPMI), Hankyoreh Economy & Society Research Institute(HERI), Construction & Economy Research Institute of Korea(CERIK), Korea Legislation Research Institute(KLRI), Korea Institute of Cost-benefit Analysis(KICA), Korea Institute for Health and Social Affairs(KIHASA), Korea Institute of Public Finance(KIPF), Korea Institute of Local Finance(KILF), The Korean Association for Public Administration(KAPA)

Other Partner Institutes

Law firm (LLC) BKL, Law firm Joeun, Yeongdong Traditional Market (Nonhyun-dong), Association of Korean Local Governments for Social Economy and Solidarity, Korean Social Science Data Center, Korea Citta Slow Korea Headquarters, The Hope Institute

Overseas Cooperation Organizations

- United Cities and Local Governments (UCLG)
- GCQE-CGCS at Keio University, Japan
- JILIN Administrative College(JAC), China
- Centre for Research in Arts and Economics (CREARE), Netherlands
- The Center for Government Services (CGS) at Rutgers University, US
- The National Center for Public Performance (NCPP) at Rutgers University, US
- Matsuyama University, Japan

- Beijing Administrative College (BAC), China
- Shanghai Administration Institute(SAI), China
- Network of Local Government Training and Research Institutes in Asia and the Pacific (LOGOTRI)
- National Graduate Institute for Policy Studies (GRIPS), Japan
- The Council of Local Authorities for International Relations (CLAIR), Seoul Office
- Hanoi Architectural University (HAU), Vietnam

Key Events

Domestic Cooperative Projects



Domestic Seminar

It is held jointly with government ministries, related organizations, local autonomous organizations, and related conferences, for research result presentation and institute promotion of the research center in order to form discourse for local autonomous development and to seek academic development.



Autonomy Decentralization and Social Innovation Forum

The forum, which is aimed at establishing a system of cooperation and sharing with various leaders who lead social innovation in order to spread the 'social value' as the core national affairs of the present government, searches innovative promotion plan centralized around the people and regional development that realistically changes the life of the people.



Contest for Outstanding Local Governments

The contest to enhance understanding in the performance of national goals, share information, and promote successful cases among local governments is jointly hosted by the Local Government Officials Development Institute under the Ministry of the Interior and Safety and the prize is awarded to the outstanding local governments officials.



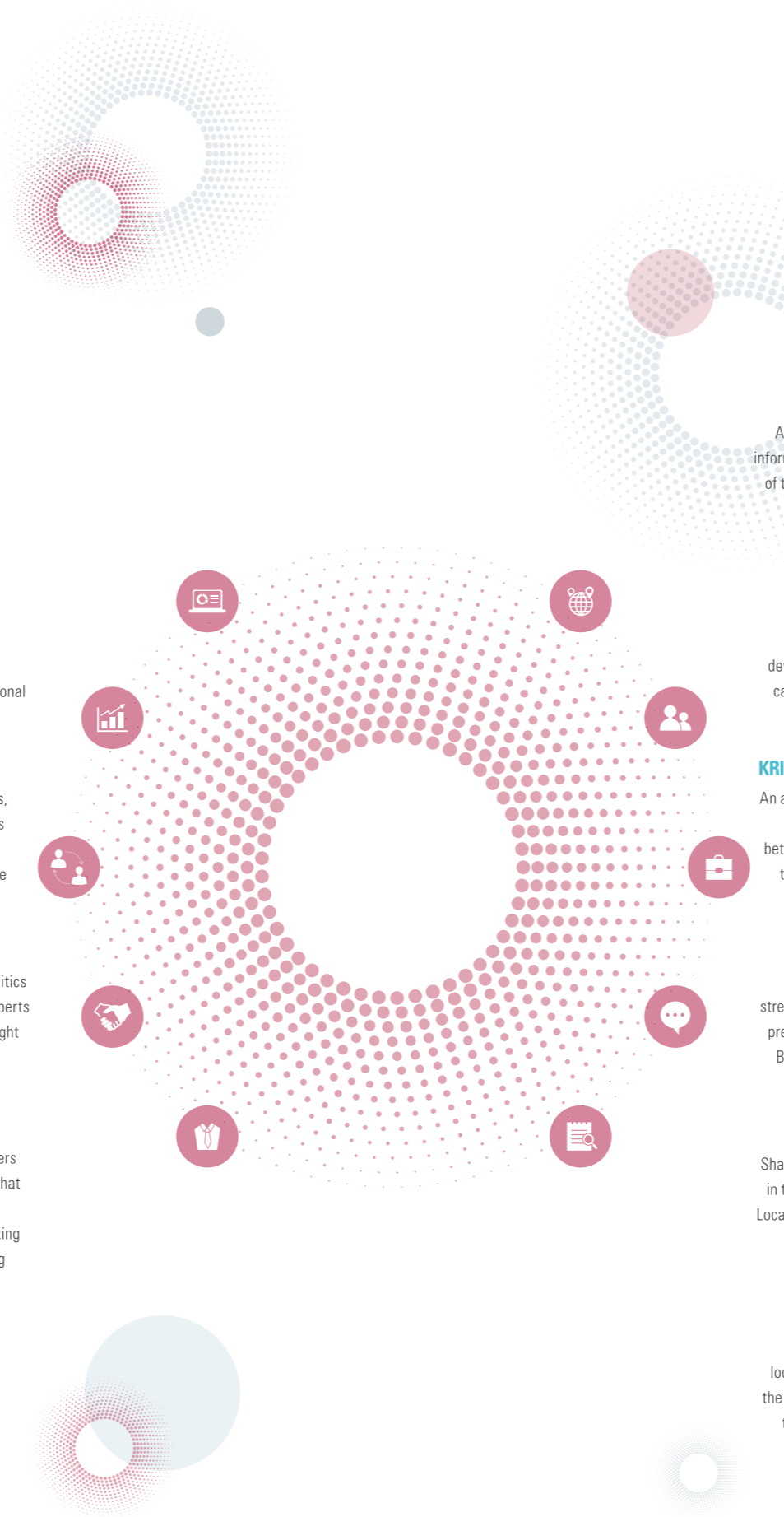
KRILA Autonomy Forum

As a place to grasp diverse research areas such as society, culture, and politics from a macro perspective by inviting related organizations and external experts to share issues on state affairs, it provides an opportunity to expand the sight of research.



KRILA Monthly Forum

As a meeting that presents and shares dissertations of industrial researchers and the latest key research details of external experts to lay a foundation that contributes towards discovering future research projects and autonomous and decentralized balanced regional development, its purpose is on activating a culture of holding small group discussions to move away from the existing lecture and education method of cramming



International Cooperative Projects

KRILA-CLAIR Korea-Japan International Seminar

An annual joint seminar for the joint development through joint research and information exchange on issues faced by the two countries since the conclusion of the academic exchange agreement with the Council of Local Authorities for International Relations (CLAIR) in 2009.



KRILA-CLAIR Korea-Japan Joint Research Meeting

An academic research meeting to promote the exchange and cooperation between the related organizations in both Korea and Japan and the development of autonomous decentralization of both countries by sharing the cases of autonomous decentralization and balanced regional development in both countries.



KRILA-GRIPS Korea-Japan Research Meeting for Regional Policy

An annual regional policy research meeting to establish a cooperation network and exchange innovative local government cases through regular visits between Korea and Japan every year after the MoU signing in 2013 to expand the academic exchanges of both institutions since the comparative study of local autonomy system of Korea and Japan in 2009.



Korea-China Joint Seminar

A joint conference to enhance the mutual cooperation relationship and strengthen the mutual research capacity through research projects and results presentation and discussion with the Shanghai Administration Institute (SAI), Beijing Administrative College (BAC), and Jilin Administrative College (JAC).



UCLG Exchange & Cooperation

Sharing the best practices among local governments and related organizations in the world through the exchange and cooperation with the United Cities and Local Governments (UCLG) and seeking alternatives to unitedly solve the global issues and commonly faced problems.



LOGOTRI Exchange & Cooperation

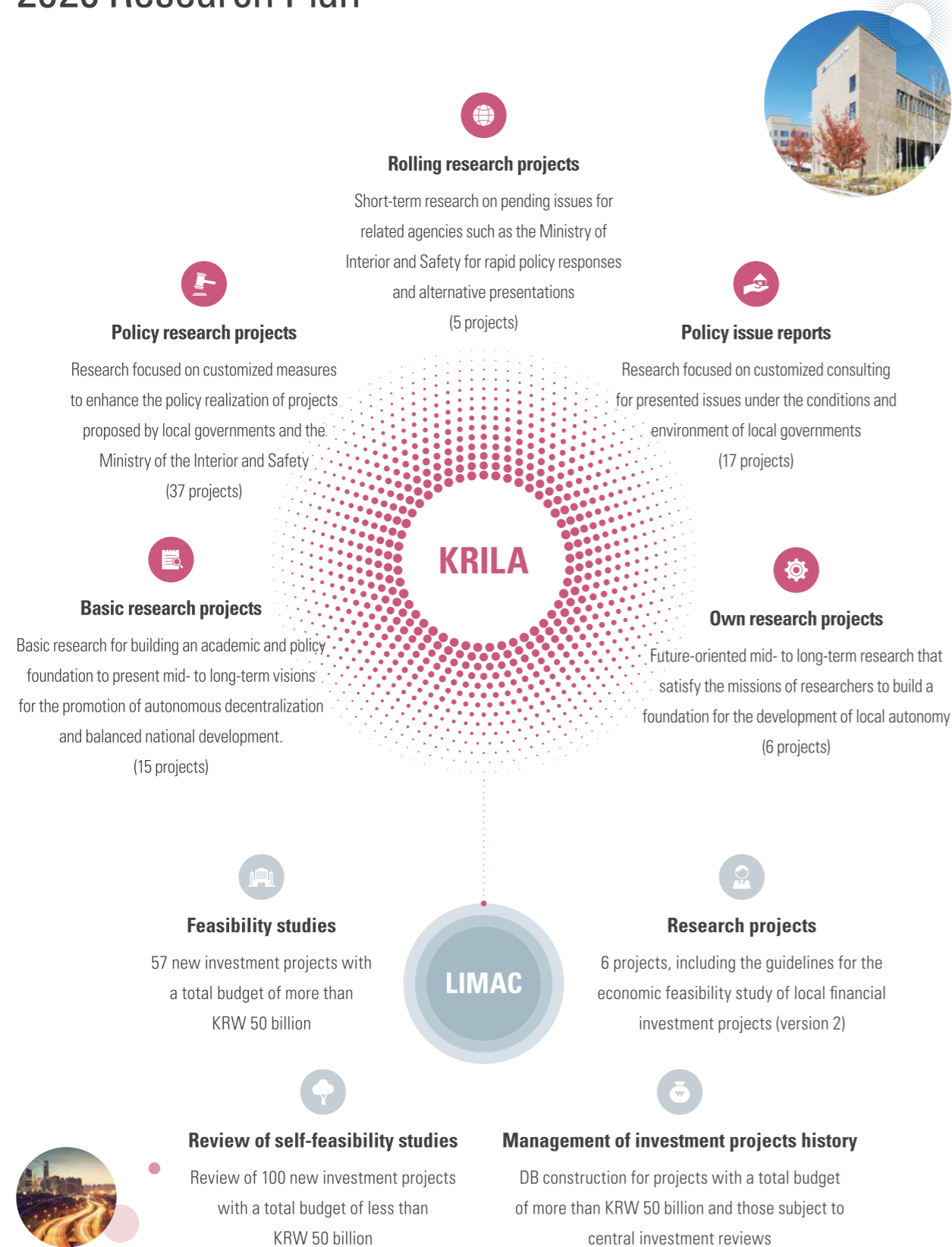
Sharing experiences and best practices of local autonomous research and local government education in Asia-Pacific countries through the activities of the Network of Local Government Training and Research Institutes in Asia and the Pacific (LOGOTRI) and mutual information exchange to contribute to the development of autonomous decentralization.



Domestic

Internal

2020 Research Plan



2019 Research Performance

Basic Research Projects (15)

- Measures to improve the life redesigning support program for the middle-aged class by local governments (double-cropping of life)
- Problem-solving measures to realize social innovation
- Study on the measures to introduce the autonomous and decentralization effect evaluation system
- Measures to practice resident-led deliberative democracy
- Measures to enhance social value-centered services for residents
- Study on the regulatory innovation for innovative regional growth
- Study on the developmental measures to improve the organization management system of local governments
- Study on the principle of work distribution between the central government and local governments and the measures to reestablish the weight
- Measures to improve the local financial adjustment system under the promotion of financial decentralization
- Direction for improvement in local finance for regional job creation
- Study on the successful promotional strategies of finance decentralization under the Moon Jae-in Administration
- Reestablishment of financial relationships among central-metropolitan-basic governments
- Measures to utilize sharing economy by local governments
- Measures of local governments to reduce particulate matters
- Formulation of inclusive balanced regional development policies

Policy Research Projects

Ministry of the Interior and Safety (20)

- Study on the measures to improve local assemblies in the era of decentralization
 - Focusing on the wage system for local assemblymen and concurrent position system
- Strategical support measures for inter-Korean exchange and cooperation of the local governments in the era of peace
- Study on the strategic special systems considering regional characteristics
- Development of manuals for joint production of administrative services
- Study on overseas cases to prepare measures to develop special systems for si, gun, and gu
- Study on the latest overseas cases of organizational compositions of autonomous governments
- Study on the operational status and improvement measures regarding licensed administrative agents
- Study on urban regeneration for integrated public life services
- Evaluation of the effectiveness of the Jeju and Sejong-type autonomous and decentralized model
- Study on the measure for the financial cooperation system to promote mutual cooperation between local governments
- Study on the innovative measures for shared local tax system in preparation for second-stage financial decentralization
- Improvement in the financial analysis indicators of local governments
- Survey on the basic materials related to the establishment of the national statistical production system in the non-profit field
- Evaluation of the performance of the financial integrity plan for local governments
- Analysis of economic effects of the availability of local vouchers in wider areas and expanded nationwide issuance of the vouchers
- Analysis of the "Better Life Index" and establishment of countermeasures
 - Focusing on the social network and community
- Development of models and projects for each type of population-declining regions
- Interim performance analysis and improvement measures for region-led job projects for youth
- Analysis of the satisfaction of participants in the region-led job projects for youth and their outcomes
- Study on the project categorization by the ministry and designing comprehensive measures against regional population decline

Cities and provinces (16)

- Analysis of the budget increase effects of local governments in connection with the rise in the local consumption tax
- Ideal decentralization model development mobilizing local resources
- Study on mid- to long-term development measures to enhance the sustainability of the Daegu Chimaac Festival
- Study on the measures of residents affected by airports
- Focusing on financing measures for victim support
- Measures to reorganize the social welfare functions of local governments in preparation for the era of autonomy and decentralization
- Study on the development of assessment indicators for the Daejeon-type resident autonomy
- Sustainable Ulsan-type population growth measures
- Study on attracting international students into Sejong Special Self-governing City and support measures
- Status of companies related to the hydrogen industry in Gyeonggi-do and analysis of demand survey
- Justification and promotion strategies for the establishment of the Gangwon Special Peace Self-Governing Province
- Measures to build efficient utilization and management of shared properties
- Measures to increase efficiency of the balanced development policy promotion system for local metropolitan governments in response to local decentralization
- Study on the measures to design evaluation for population effects in Jeollabuk-do
- Survey and analysis of life status of alien residents in Jeollanam-do
- Real estate measures tailored to Gyeongsangnam-do that enhances publicness
- Study on building the prescribed number management system of the Jeju Special Self-Governing Province

Rolling research projects (9)

- Study on adequate installation standards for public toilets considering the building purpose
- Measures to introduce the multiple address system
- Local autonomy in Korea (Korean and English versions)
- Status analysis and utilization measures regarding public participation systems
- Status and development measures regarding regional digital innovation
- Study on the establishment and operation model regional archives that consider the regional characteristics
- Measures to institutionalize selective transfer of authorities for decentralization tailored to each region
- Measures to nurture disaster relief professionals and vitalize education
- Feasibility study on the establishment of island development research institute

Policy issue reports (18)

- Measures for efficient operation and promotion of passenger car mileage
- Development of the promotion model for the autonomous police system unique to Busan
- Study on the preemptive measures for safety inspections through safety corruption cases
- Study on the status analysis and designing policy agenda for non-permanent workers in Incheon
- Study on the measures for efficient sharing of research outcomes of local governments
- Policy measures for the state budget-contribution for the improvement and reconstruction of road facilities crossing railroads
- Policy directions for sustainable parks and green zones in Daejeon
- Status and causal analysis for the population migration in Ulsan
- Formulation of reasonable installation standards for li, tong, band in Sejong
- Efficient operating measures for the security deposit support project for low-income groups in Gyeonggi-do
- Measures to expand urban forests to reduce particulate matters
- Positive effects (cases) and efficient operating measures regarding the living SOC
- Financial effects and financing measures under financial decentralization and the work transfer caused by special accounting for balanced development
- Second-stage financial decentralization and countermeasures of Jeollabuk-do
- Tourism content development for the southwest coastal area
- Construction of the model for the rural migration of the youth unique to Gyeongsangbuk-do and direction of the promotion of public participation projects
- Formulation of the Gyeongsangbuk-do autonomous police model due to the introduction of the autonomous police system for each metropolitan area
- Policy proposals to create an environment for the economically active population to settle in the Jeju Special Self-Governing Province

Own research projects (6)

- Japan's hometown tax payment system and measures to apply the system in Korea
- Model development for resident-led participation budget system
- Measures to foster the makgeolli industry to revitalize local economies
- Platform status and improvement measures for policy proposals of metropolitan and local governments and central administrative agencies

Consigned research projects (25)

- Adequacy review of the manpower and organization of the Gyeongsangbuk-Do Culture and Tourism Organization
- Consulting for organization diagnosis for efficient organizational operation and management of the seventh popular election
- Study on the organization diagnosis of Uleung-gun
- Assessment of financial projects of Paju in 2019
- Complete work investigation under the statutes
- Study on the organization diagnosis of Hwaseong in 2019
- Status analysis of local financial operations and fund operation measures
- Study on the organization diagnosis for Jung-gu, Incheon
- Study on the manpower diagnosis for visiting community service centers
- Enactment of the Act on Fostering Village Companies and its Enforcement Decree
- Organization diagnosis for local state-owned enterprises (public corporations and services) in Daejeon
- Study on the comprehensive plans for regional innovation
- Improvement measures for the system promoting the national balanced development policy for the improved quality of life of the public

Feasibility studies (adequacy review of project plans, reexamination of feasibility, feasibility review) (70)

- 69 cases, including the headquarters relocation project for Dongbu Roads & Bridges Maintenance Office, Seoul

Review of self-feasibility studies (145)

- A total of 145 projects

History management of investment projects (1,469)

- A total of 1,469 projects

- Outcome analysis and improvement measures for improved efficiency of health promotion projects focused on local societies
- Study on the development of the KRILA-type organization diagnosis model for local governments
- Focusing on the manpower estimation

- Outcome analysis for local support projects in Yeongju
- Financial analysis for local governments in 2019
- Study on the development of child care-friendly indicators to secure the effectiveness of policies against low birth rate
- Organization analysis and diagnosis study on local governments in 2019
- Basic formulation and feasibility study on autonomous village support centers in Chuncheon
- Study on organization diagnosis in Uljin-gun
- Study on organizational manpower diagnosis and improvement in Goseong-gun
- Study on organization diagnosis in Yangcheon-gu
- Study on the formulation and development measures for detailed installation standards for public toilets
- Study on the cooperative measures between the Ministry of Foreign Affairs and local governments to build a foundation promoting public diplomacy
- Study on the formulation of revised regulations on the standards for expense contribution of local governments
- PMC of capacity enhancement projects for the Saemaul-based policy development in Nicaragua

LIMACresearch projects (7)

- Study on the feasibility evaluation methods of local financial investment projects considering balanced regional development
- Study on the improvement measures estimating demands for cultural facilities
- Study on the standardization of the survey and designing of conditional value measurement (CVM) for the feasibility surveys of local financial investment projects
- Study on the estimation of social costs of illegal parking and stopping
- Study on the measures to enhance the use of the history management information on investment projects
- Study on the measures to reflect the social value of the feasibility survey on local financial investment projects
- Study on the establishment of the standards for investment reviews for industrial complex creation projects

03 Knowledge Sharing

We create precious finishing primers in the local society.

A research center that has provided a long-term viable vision for local autonomy and autonomous decentralization, and a research center that has provided generous support for the major challenges of local administration, this is the result of the last 30 years that the Korea Research Institute for Local Administration walked toward. It will play the role of guiding the autonomy of the advanced province as it welcomes a new beginning for the next 30 years.

Publications

The Korea Research Institute for Local Administration will contribute to the advancement of local autonomy in Korea by disseminating research results related to local autonomy and sharing knowledge and information through research reports and periodicals.



Research Reports

The Korea Research Institute for Local Administration publishes various research reports including basic research reports, policy research reports, and policy issue reports in order to provide the theoretical, academic, and political bases for local autonomy related fields and publishes policy documents for policymakers and researchers.



The Korea Local Administration Review

As a unique and prominent scholarly journal in the field of municipalities registered by the Korea Research Foundation, it includes results of theoretical and empirical studies on local administration, local finance, and regional development and contributes to the specialization of local administration.



Local Autonomy Issues and Forum

As the main publicity material for the Korea Research Institute for Local Administration published every other month, it provides opinions and alternatives of experts and related persons on major domestic and overseas issues related to local autonomy, as well as best domestic and overseas practices and related information through booklets and emails.



Local Autonomy Policy Brief

This is an online biweekly publication that provides information on domestic and overseas issues related to the core research content and local autonomy on the main pending issues and research center's main research report to the central government, local governments, and academia.



Global Trend in Local Autonomy

Online publications are issued monthly to introduce the trending issues in the local autonomy, local finance, and regional development in the world presented by foreign correspondents.

KRILA Website

On the homepage of the Korea Research Institute for Local Administration, you can search and download the contents of research reports and local government related materials published by the research center. <http://www.krila.re.kr>



Membership Services

The Korea Research Institute for Local Administration operates a membership system to contribute to the development of local autonomy and autonomous decentralization through the diffusion of research results.

Membership Category		Membership Fee	Subscription Resource Summary
General Member	Individual	30,000 won	The Korea Local Administration Review, newsletters, invitation to seminars, public hearing, etc.
	Organization	50,000 won	
Special member	Individual	100,000 won	Local administration research, research reports, newsletters, invitations to seminars, public hearings, etc.
	Organization	150,000 won	

How to join

Research Center Homepage ▶ Customer Support ▶ Usage Guide ▶ You can download and fill out the form from the resource membership registration guide and apply through phone, mail or e-mail.

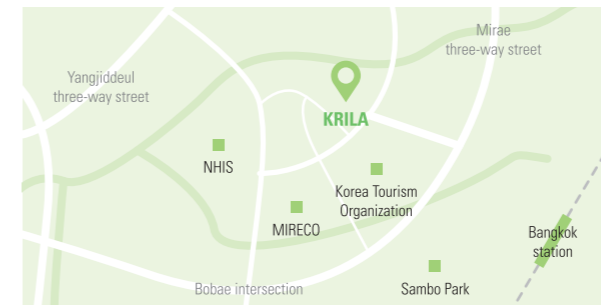
Contact Us

One year from the date of payment

Registration Inquiry

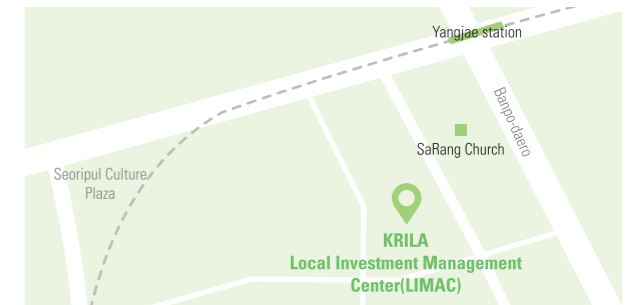
(26464) 21, Segye-ro, Wonju-si, Gangwon-do (Bangok-dong) KRILA Resource Room
T. 033-769-9825 E. krila@krila.re.kr

Contact



Korea Research Institute for Local Administration (Wonju)

(26464) 21, Segye-ro, Wonju-si, Gangwon-do (Bangok-dong, KRILA)
T. 033-769-9999 F. 033-769-9805



Korea Research Institute for Local Administration Local Investment Management Center(Seocho)

(06655) 16, Banpo-daero 27-gil, Seocho-gu, Seoul (Seocho-dong, Park Building) #201
T. 02-3488-7300 F. 02-3488-7329



The Korea Research Institute for Local Administration will lead in the policy development for government innovation and social innovation promotion and practice autonomous decentralization and balanced development.

